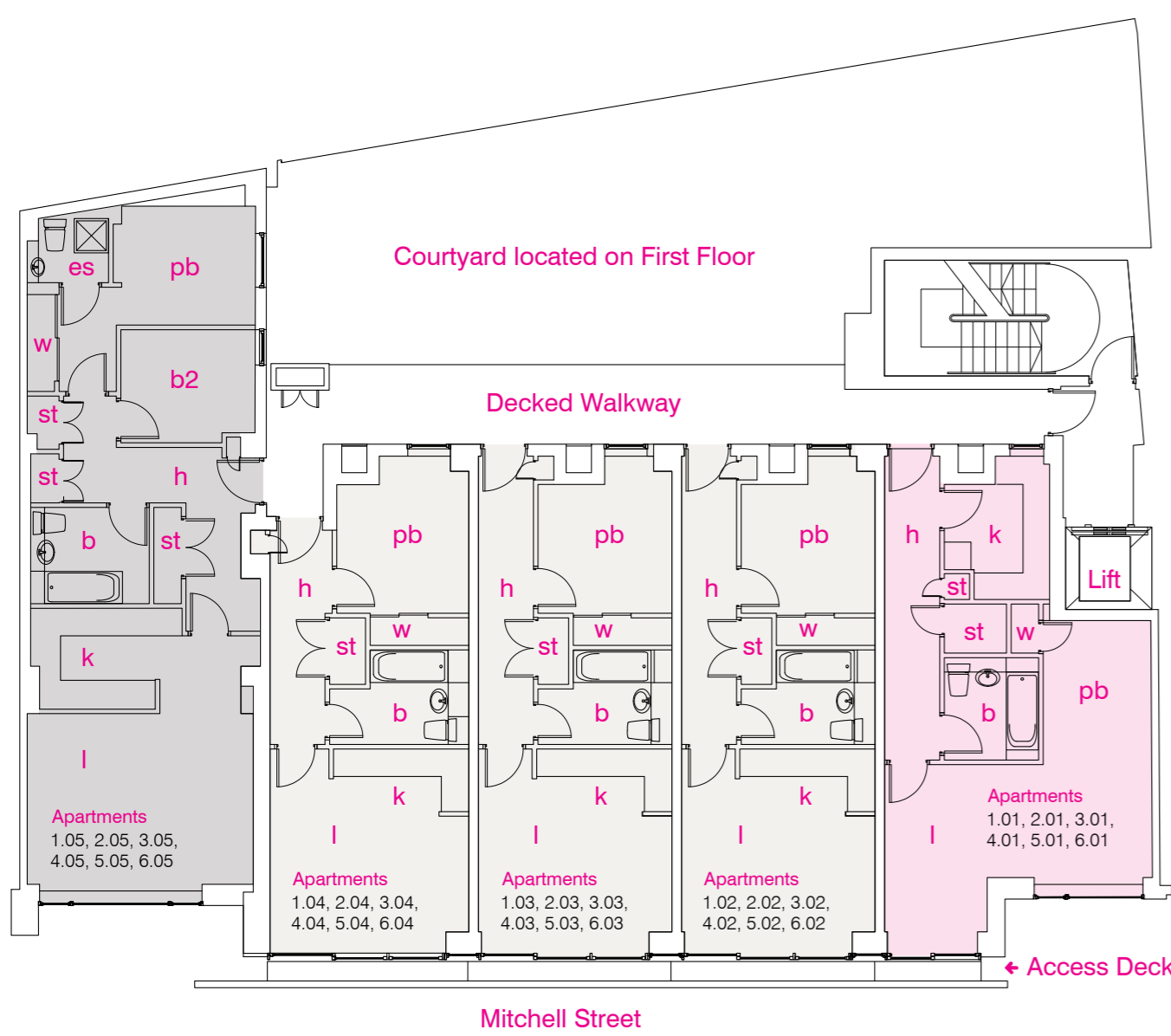


# 44 stylish apartments

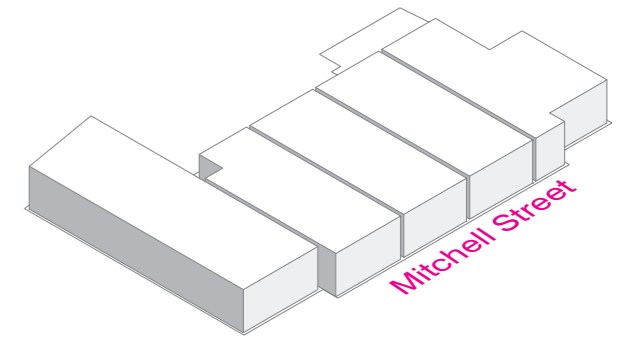
## phase two floor plans

Studio, 1 and 2 bedroom apartments.

Floor Plan Key: b - bathroom b2 - 2nd bedroom es - en suite h - hall k - kitchen l - living room pb - principal bedroom st - storage t - terrace w - wardrobe



## floors 1 to 6



### 2 bedroom

**Description**  
2 Bedroom Apartment. Living Room with recessed Kitchen. Bathroom and Ensuite. Stores.

**Dimensions**  
**72 sqm/775 sqft Total Floor Area**  
Living Space 4.930 x 3.868 (16' 2" x 12' 8")  
1.706 x 1.688 (5' 7" x 5' 7")  
Kitchen (at widest) 3.304 x 2.200 (10' 10" x 7' 3")  
Principal Bedroom 3.105 x 2.594 (10' 2" x 8' 6") (exc. wardrobe)  
2.273 x 1.248 (7' 5" x 4' 1")  
Ensuite Shower Room 1.772 x 1.400 (5' 10" x 4' 7") (at widest)  
Bedroom 2 2.929 x 2.468 (9' 7" x 8' 1")  
Bathroom 2.586 x 2.099 (8' 6" x 6' 11")

**Apartments**  
**1.05, 2.05, 3.05, 4.05, 5.05, 6.05**

### 1 bedroom

**Description**  
1 Bedroom Apartment. Living Room with open plan Kitchen. Sliding doors to Access Deck. Bathroom and Store.

**Dimensions**  
**43.5 sqm/468 sqft Total Floor Area**  
Open Plan Living 4.452 x 4.336 (14' 7" x 14' 3")  
Principal Bedroom 3.426 x 2.880 (11' 3" x 9' 5") (at shortest exc. wardrobe)  
Bathroom 2.150 x 2.060 (7' 1" x 6' 9")  
1.210 x 0.768 (3' 12" x 2' 11")  
Access Deck 4.371 x 0.450 (14' 4" x 1' 6")

**Apartments**  
**1.04, 2.04, 3.04, 4.04, 5.04, 6.04**

### 1 bedroom

**Description**  
1 Bedroom Apartment. Living Room with open plan Kitchen. Sliding doors to Access Deck. Bathroom and Store.

**Dimensions**  
**44.5 sqm/478 sqft Total Floor Area**  
Open Plan Living 4.455 x 4.220 (14' 7" x 13' 10")  
Principal Bedroom 2.920 x 2.810 (9' 7" x 9' 3") (at shortest exc. wardrobe)  
Bathroom 2.150 x 2.060 (7' 1" x 6' 9")  
1.210 x 0.768 (3' 12" x 2' 11")  
Access Deck 4.371 x 0.450 (14' 4" x 1' 6")

**Apartments**  
**1.03, 2.03, 3.03, 4.03, 5.03, 6.03**

### 1 bedroom

**Description**  
1 Bedroom Apartment. Living Room with open plan Kitchen. Sliding doors to Access Deck. Bathroom and Store.

**Dimensions**  
**44.5 sqm/478 sqft Total Floor Area**  
Open Plan Living 4.455 x 4.220 (14' 7" x 13' 10")  
Principal Bedroom 2.920 x 2.810 (9' 7" x 9' 3") (at shortest exc. wardrobe)  
Bathroom 2.150 x 2.060 (7' 1" x 6' 9")  
1.210 x 0.768 (3' 12" x 2' 11")  
Access Deck 4.371 x 0.450 (14' 4" x 1' 6")

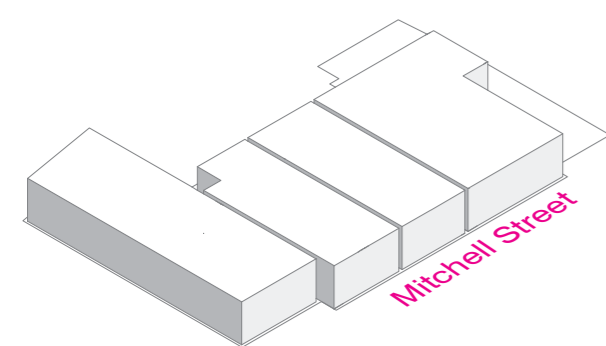
**Apartments**  
**1.02, 2.02, 3.02, 4.02, 5.02, 6.02**

### Studio

**Description**  
Studio with Separate Kitchen, Bedroom Space and Access Deck

**Dimensions**  
**48 sqm/516 sqft Total Floor Area**  
Living Space 5.826 x 2.464 (19' 1" x 8' 1")  
2.236 x 1.183 (7' 4" x 3' 11")  
2.297 x 1.859 (7' 6" x 6' 1")  
Kitchen 1.647 x 0.650 (5' 5" x 2' 2")  
1.184 x 0.617 (3' 11" x 2' 0")  
3.042 x 2.358 (10' 0" x 7' 9")  
Bedroom Area (exc. wardrobe) 2.050 x 1.920 (6' 9" x 6' 4")  
Bathroom (at shortest) 2.365 x 0.450 (7' 9" x 1' 6")

**Apartments**  
**1.01, 2.01, 3.01, 4.01, 5.01, 6.01**



## floors 7 and 8

### 2 bedroom

**Description**  
2 Bedroom Apartment. Living Room with recessed Kitchen. Bathroom and Ensuite. Stores.

**Dimensions**  
**72 sqm/775 sqft Total Floor Area**  
Living Space 4.930 x 3.868 (16' 2" x 12' 8")  
1.706 x 1.688 (5' 7" x 5' 7")  
Kitchen (at widest) 3.304 x 2.200 (10' 10" x 7' 3")  
Principal Bedroom 3.105 x 2.594 (10' 2" x 8' 6") (exc. wardrobe)  
2.273 x 1.248 (7' 5" x 4' 1")  
Ensuite Shower Room 1.772 x 1.400 (5' 10" x 4' 7") (at widest)  
Bedroom 2 2.929 x 2.468 (9' 7" x 8' 1")  
Bathroom 2.586 x 2.099 (8' 6" x 6' 11")

**Apartments**  
**7.04, 8.04**

### 1 bedroom

**Description**  
1 Bedroom Apartment. Living Room with open plan Kitchen. Sliding doors to Access Deck. Bathroom and Store.

**Dimensions**  
**43.5 sqm/468 sqft Total Floor Area**  
Open Plan Living 4.452 x 4.336 (14' 7" x 14' 3")  
Principal Bedroom 3.426 x 2.880 (11' 3" x 9' 5") (at shortest exc. wardrobe)  
Bathroom 2.150 x 2.060 (7' 1" x 6' 9")  
1.210 x 0.768 (3' 12" x 2' 11")  
Access Deck 4.371 x 0.450 (14' 4" x 1' 6")

**Apartments**  
**7.03, 8.03**

### 1 bedroom

**Description**  
1 Bedroom Apartment. Living Room with open plan Kitchen. Sliding doors to Access Deck. Bathroom and Store.

**Dimensions**  
**44.5 sqm/478 sqft Total Floor Area**  
Open Plan Living 4.455 x 4.220 (14' 7" x 13' 10")  
Principal Bedroom 2.920 x 2.810 (9' 7" x 9' 3") (at shortest exc. wardrobe)  
Bathroom 2.150 x 2.060 (7' 1" x 6' 9")  
1.210 x 0.768 (3' 12" x 2' 11")  
Access Deck 4.371 x 0.450 (14' 4" x 1' 6")

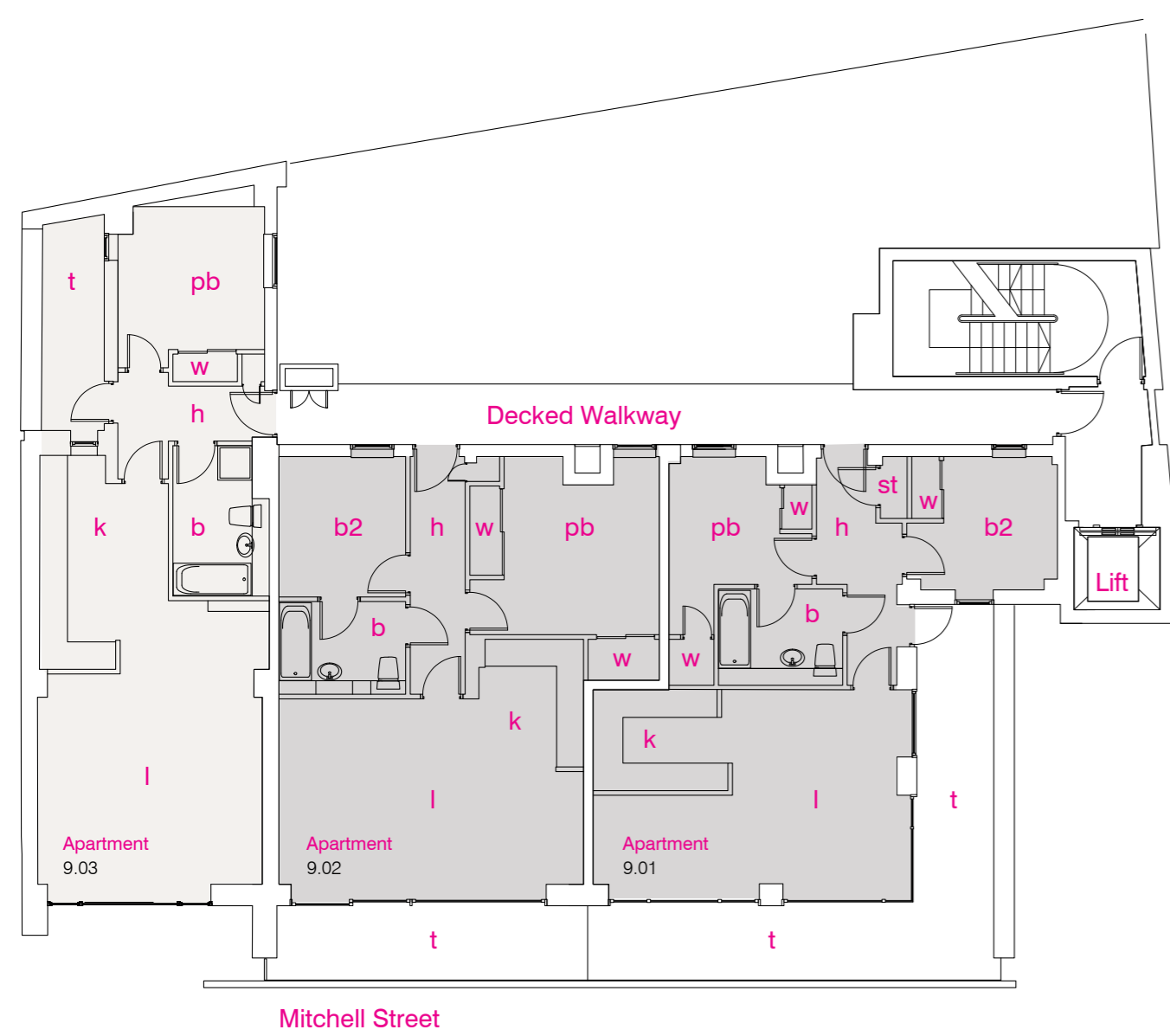
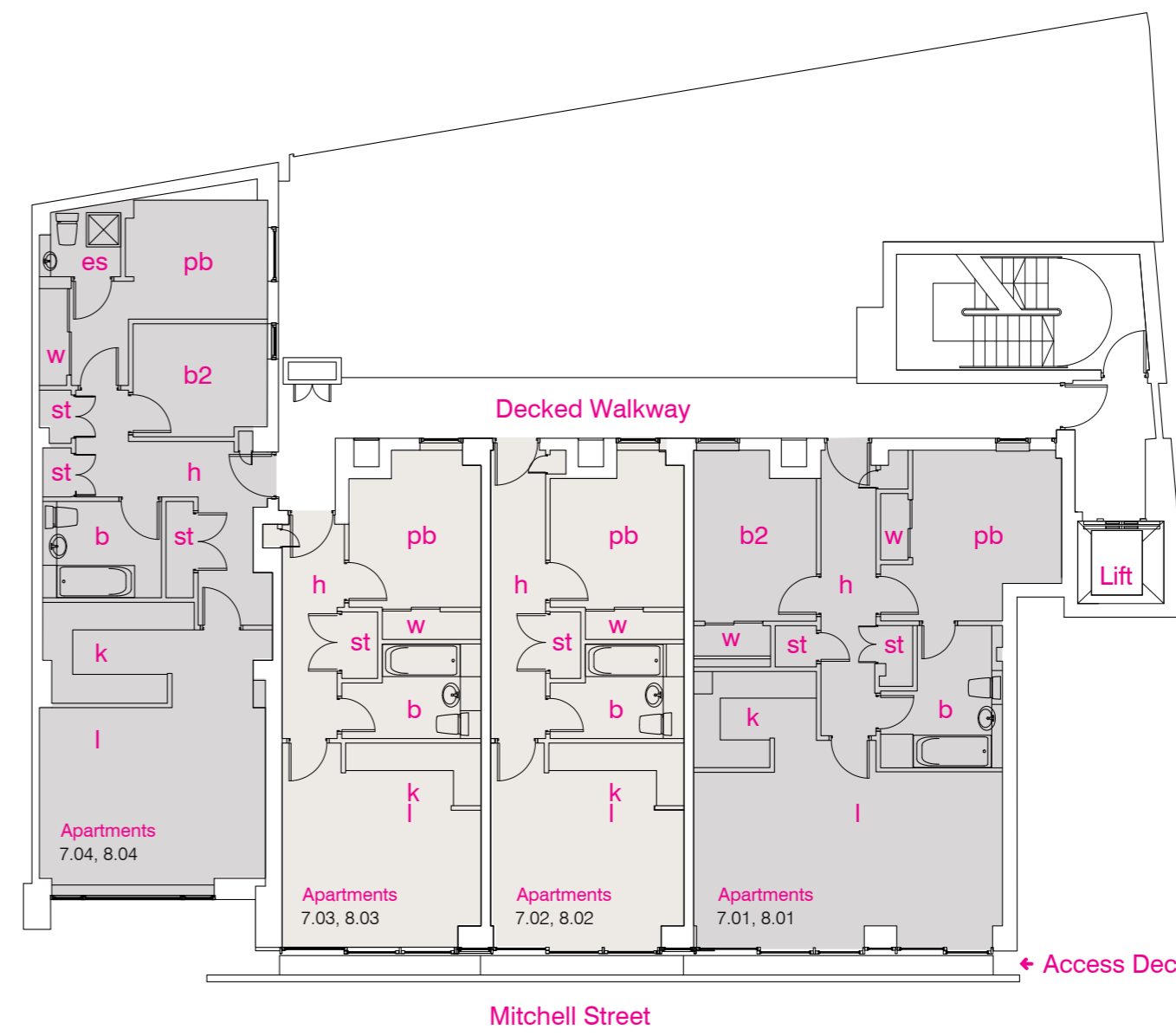
**Apartments**  
**7.02, 8.02**

### 2 bedroom

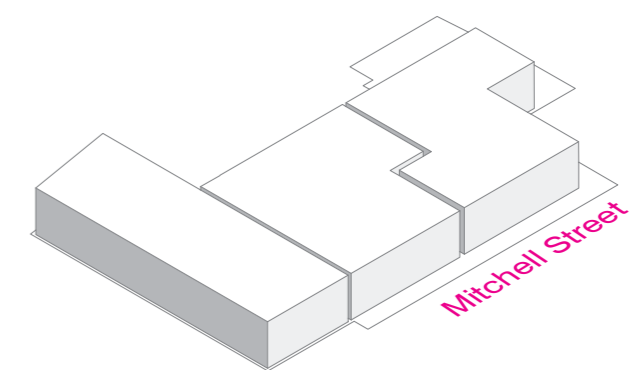
**Description**  
2 Bedroom Apartment. Living Space with glazed doors to Terrace. Semi-recessed Kitchen. Bathroom with access from Principle Bedroom and Hall. Stores.

**Dimensions**  
**75.5 sqm/812 sqft Total Floor Area**  
Living Space 6.737 x 3.851 (22' 1" x 12' 6")  
Kitchen 2.677 x 2.097 (8' 9" x 6' 11")  
3.250 x 2.906 (10' 8" x 9' 6") (exc. wardrobe)  
2.660 x 1.228 (8' 9" x 4' 0")  
Bedroom 2 3.111 x 2.677 (10' 2" x 8' 9") (exc. wardrobe)  
1.653 x 0.616 (5' 5" x 2' 0")  
3.103 x 1.625 (10' 2" x 5' 4")  
Access Deck 6.765 x 0.450 (22' 2" x 1' 6")

**Apartments**  
**7.01, 8.01**



## floor 9



### 1 bedroom

**Description**  
1 Bedroom Apartment. Living Space with Kitchen area. Bedroom with Terrace. Bathroom.

**Dimensions**  
**63.5 sqm/683 sqft Total Floor Area**  
Living Space 4.904 x 4.741 (16' 1" x 15' 7")  
2.205 x 1.599 (7' 3" x 5' 3")  
4.671 x 2.806 (15' 4" x 9' 2")  
Kitchen 3.201 x 3.118 (10' 6" x 10' 3")  
Bedroom (exc. wardrobe) 3.282 x 2.108 (10' 9" x 6' 11")  
Bathroom (at widest) 4.605 x 1.358 (15' 1" x 4' 5")  
Terrace

**Apartments**  
**9.03**

### 2 bedroom

**Description**  
2 Bedroom Apartment. Living Space with glazed doors to Terrace. Open Plan Kitchen. Bathroom with access from Principle Bedroom and Hall. Store.

**Dimensions**  
**70 sqm/753 sqft Total Floor Area**  
Living Space 2.148 x 1.300 (7' 11" x 4' 3")  
Principal Bedroom (at 3.855 x 3.270 (11' 1" x 10' 9") shortest exc. Wardrobes)  
Bedroom 2 3.065 x 2.765 (10' 1" x 9' 1")  
Bathroom 2.765 x 2.024 (9' 1" x 6' 8")  
Terrace 6.384 x 1.624 (20' 11" x 5' 4")

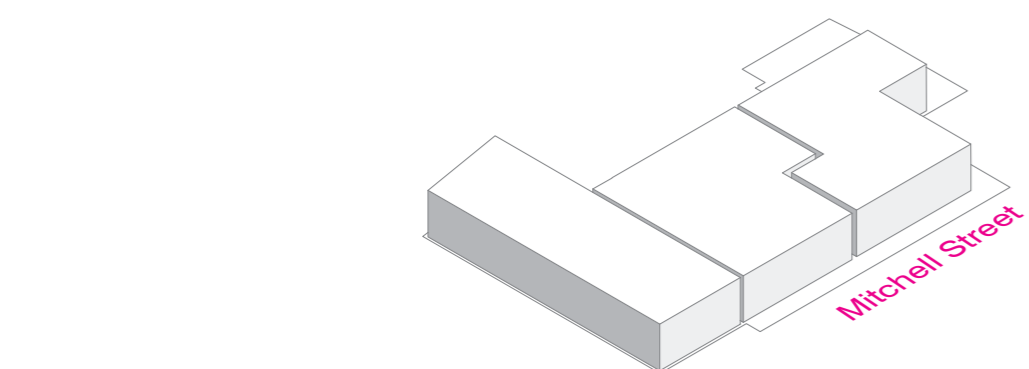
**Apartments**  
**9.02**

### 2 bedroom

**Description**  
2 Bedroom Apartment. Living Space with glazed doors to large Terrace. Open Plan Kitchen. Bathroom with access from Principle Bedroom and Hall. Store.

**Dimensions**  
**64 sqm/688 sqft Total Floor Area**  
Living Space 3.590 x 2.308 (11' 9" x 7' 7")  
Kitchen Recess 2.933 x 2.200 (9' 7" x 7' 3")  
Principal Bedroom (at 2.790 x 2.421 (9' 2" x 7' 11") shortest exc. Wardrobes)  
Bedroom 2 (at shortest 2.911 x 2.480 (9' 7" x 8' 2") exc. Wardrobes)  
Bathroom 2.674 x 2.103 (8' 9" x 6' 11")  
Terrace 8.203 x 1.568 (26' 11" x 5' 2")  
7.449 x 1.624 (24' 5" x 5' 4")

**Apartments**  
**9.01**



### 1 bedroom

**Description**  
1 Bedroom Apartment. Living Space with Kitchen area. Bedroom with Terrace. Bathroom.

**Dimensions**  
**63.5 sqm/683 sqft Total Floor Area**  
Living Space 4.904 x 4.741 (16' 1" x 15' 7")  
2.205 x 1.599 (7' 3" x 5' 3")  
4.671 x 2.806 (15' 4" x 9' 2")  
Kitchen 3.201 x 3.118 (10' 6" x 10' 3")  
Bedroom (exc. wardrobe) 3.282 x 2.108 (10' 9" x 6' 11")  
Bathroom (at widest) 4.605 x 1.358 (15' 1" x 4' 5")  
Terrace

**Apartments**  
**10.03**

### 2 bedroom

**Description**  
2 Bedroom Apartment. Living Space with glazed doors to Terrace. Open Plan Kitchen. Bathroom with access from Principle Bedroom and Hall. Stores.

**Dimensions**  
**70 sqm/753 sqft Total Floor Area**  
Living Space 2.148 x 1.300 (7' 11" x 4' 3")  
Principal Bedroom (at 3.855 x 3.270 (11' 1" x 10' 9") shortest exc. Wardrobes)  
Bedroom 2 3.065 x 2.765 (10' 1" x 9' 1")  
Bathroom 2.765 x 2.024 (9' 1" x 6' 8")  
Terrace 6.384 x 1.624 (20' 11" x 5' 4")

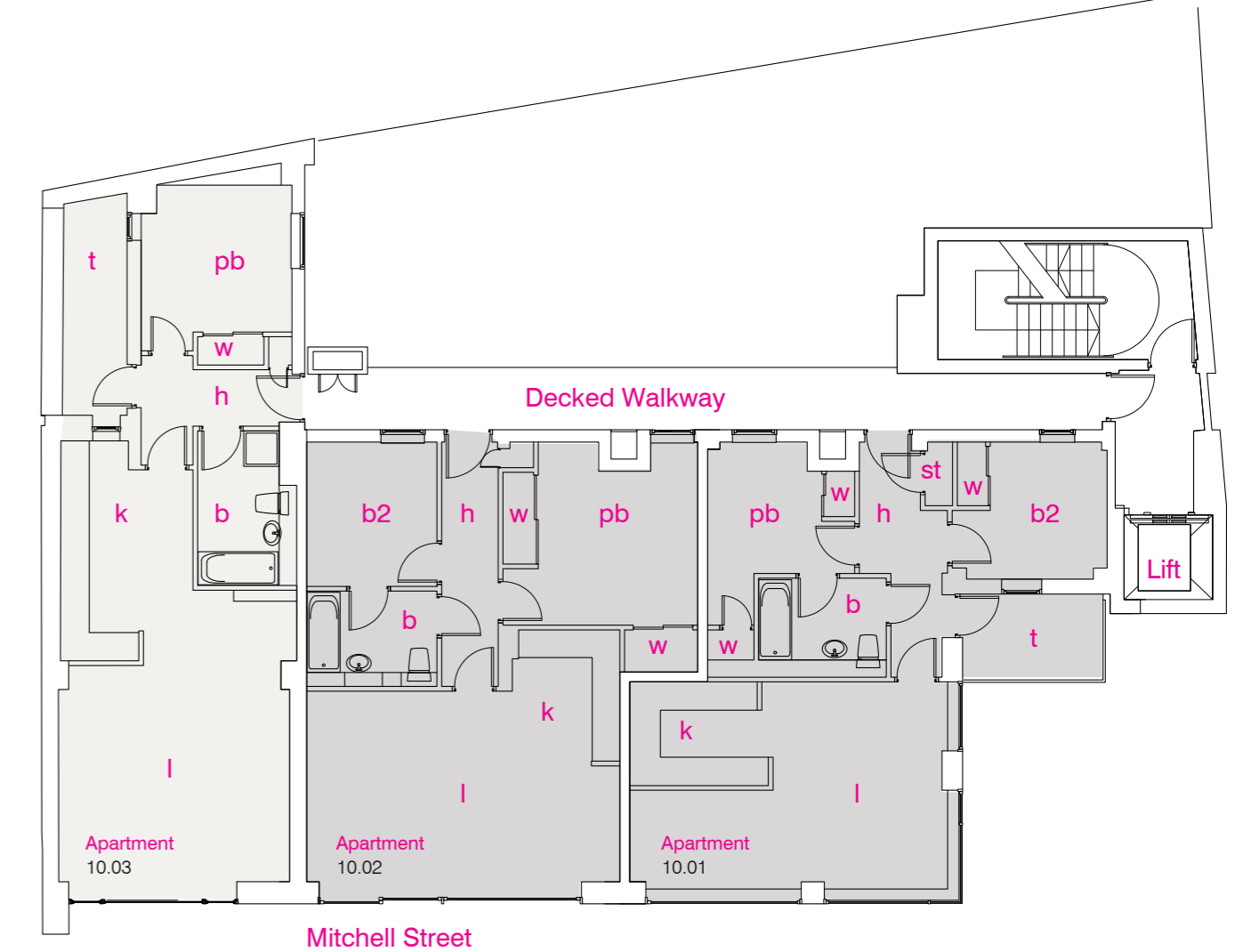
**Apartments**  
**10.02**

### 2 bedroom

**Description**  
2 Bedroom Apartment. Living Space with extensive glazing. Open Plan Kitchen. Enclosed Terrace. Bathroom with access from Principle Bedroom and Hall. Store.

**Dimensions**  
**64 sqm/688 sqft Total Floor Area**  
Living Space 6.750 x 2.097 (22' 2" x 6' 11")  
Kitchen Recess 3.587 x 2.202 (11' 9" x 7' 3")  
Principal Bedroom (at 2.790 x 2.421 (9' 2" x 7' 11") shortest exc. Wardrobes)  
Bedroom 2 (at shortest 2.911 x 2.480 (9' 7" x 8' 2") exc. Wardrobes)  
Bathroom 2.674 x 2.103 (8' 9" x 6' 11")  
Terrace 8.203 x 1.568 (26' 11" x 5' 2")  
7.449 x 1.624 (24' 5" x 5' 4")

**Apartments**  
**10.01**



**Important notice**  
This brochure/web site has been published before construction work has been finalised and is designed to be illustrative of the development. Whilst these particulars are believed to be correct, their accuracy cannot be guaranteed and during the course of construction there may be some variation to them. Purchasers and tenants are given notice that:  
1. These particulars do not constitute any part of an offer or contract.  
2. All statements made in these particulars are made without responsibility on the part of the agent or the developer.  
3. None of the statements contained in these particulars are to be relied upon as statement or representative of fact.  
4. Any intended purchaser or tenant must satisfy him/herself by inspection or otherwise as to the correctness of each of these statements contained in these particulars.  
5. The developer does not make or give, nor any person in their employment has any authority to make or give any representation or warranty whatsoever in relation to Vienna Apartments or any part thereof.  
6. The Selling Agents do not make or give, nor any person in their employment has any authority to make or give any representation or warranty whatsoever in relation to Vienna Apartments or any part thereof.  
7. Date of Publication December 2009.